

# The Repeater



- / . . . . / . / . - . / . / . - - . / . / . - / - / . / . - . //

**WX4BCA 147.285 + (131.8)**

*Amateur Radio Club of Butts County*

Jackson, GA



USA

## Amateur Radio Sleuth Rediscovered a Cold War-Era 'Zombie Satellite'

The satellite, launched in 1967, has been orbiting the Earth for decades with no one listening.

**BY KYLE MIZOKAMI**

Apr 28, 2020

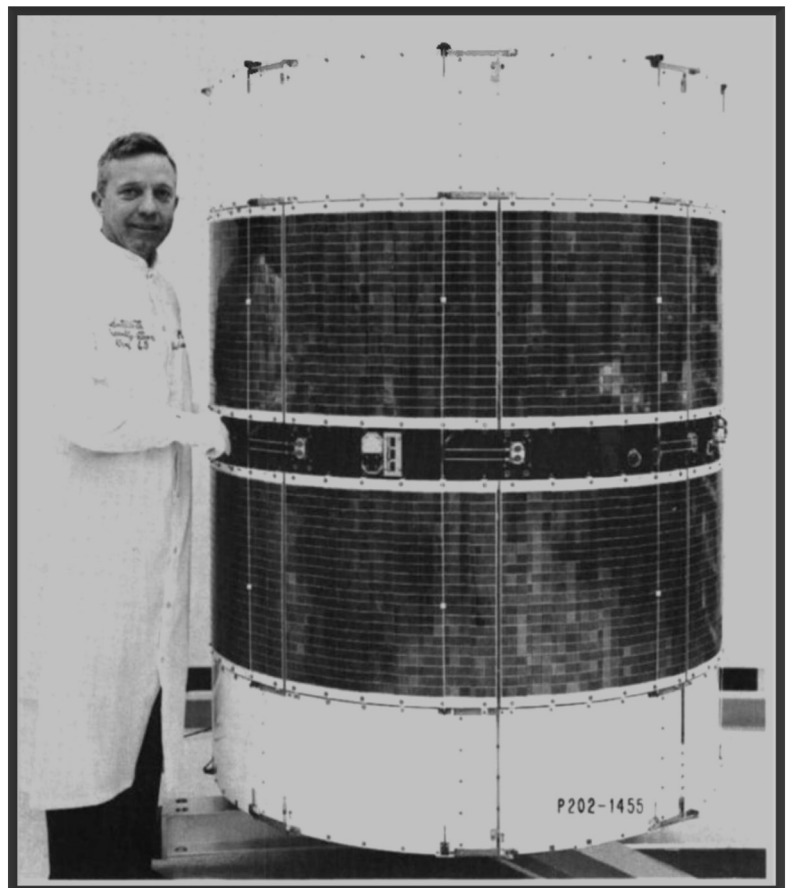
FLIPBOARD MAGAZINE

SCOTT TILLEY/TWITTER

**LES-5, designed by MIT, was designed to pioneer satellite communications.**

**The satellite operated from 1967 to 1971, when it was decommissioned.**

**In March 2020, the satellite was rediscovered in geosynchronous orbit, still broadcasting nearly fifty years after it was retired.**



*Nancy Phillips*

Editor

573-528-0697

K4NEP@arrl.net

2 - Installing FLdigi - Jeff

4 - From the Backacre - Buzz

4 - SGH Report - Dan

5 - Net Manager - Ken

6 - BCHD, EP Survey - Ken

7 - ARES Report - David B

8 - Nets, Contact Info

**May 2020**

**Vol 8, No 5**

# INSTALLING FLDIGI

\_ JEFF PHILLIPS KN4FRG

Fast Light Digital (FLDIGI) is a computer program intended for Ham radio operations using their personal computer (PC). FLDIGI operates just like other like software in conjunction with a HF/VHF/UHF radio transceiver along with a soundcard as the main means to communicate across these different platforms. FLDIGI is multi-mode allowing it to operate using several different digital modes within a single computer program. FLDIGI can operate on Windows, Mac, and Linux.

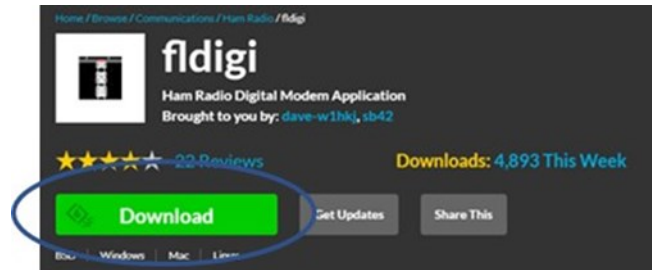
This article provides those new to FLDIGI the instructions to install and/or update FLDIGI. A good source of information for setting different transceivers, etc. please use the following link for a detailed guide - <http://www.w1hkj.com/beginners.html>. The link for access to manuals and an alternate means to download FLDIGI and other associated programs used in conjunction with FLDIGI - <http://www.w1hkj.com/>. For those HAM operators wishing to control their rig via FLDIGI and plans to use RIGCAT, then this link will provide the location to download the appropriate XML file for your transceiver grouped by manufacturers - <https://sourceforge.net/projects/fldigi/files/xmls/>.

So, let us get started to install or update FLDIGI.

Note: Just as a precaution before updating FLDIGI from a previous version, I would take a screenshot (In Windows 10, I use the "snipping tool") of your current configurations and save them to your computer - Logging, Operator Station, Rig Control, Soundcard, etc.

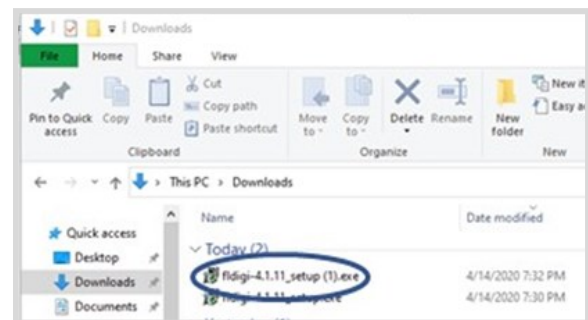
1. Go to <https://sourceforge.net/projects/fldigi/>.

2. Click download.

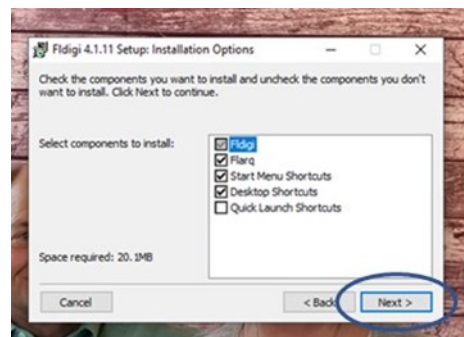


3. Download will start after a moment, you will receive a pop-up showing you where the file will download (you can change the location at this pop-up), ensure you remember where you saved the file. Note: dependent on your browser, it could show up at the bottom or at the top of the webpage.

4. Once the download is complete, double-click on the downloaded file.



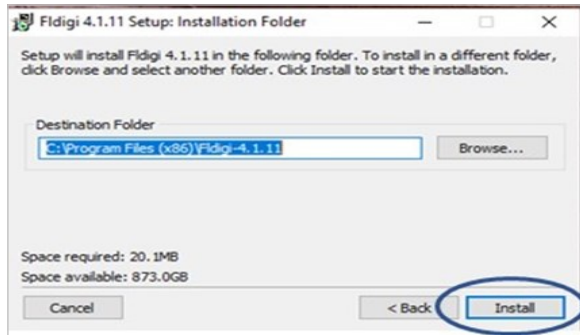
5. You will see the License Info dialog box and hit "Continue." At the next screen hit "Next" (The defaults are fine, if you are an experienced user, make whatever changes you wish.)



**FLdigi**  
continued  
on page 3

## FLdigi continued from page 2

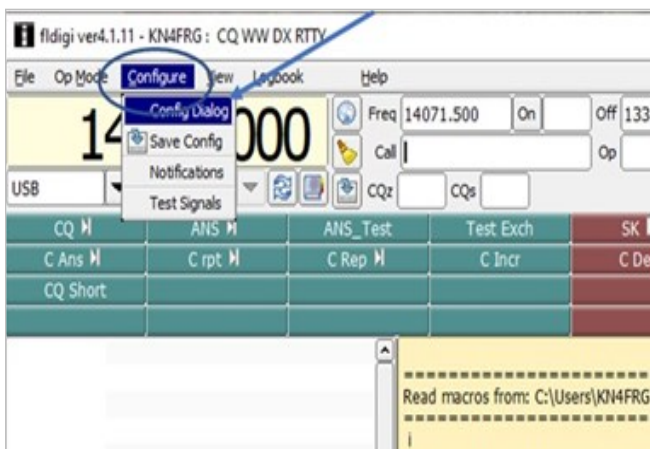
## 6. Next Hit "Install."



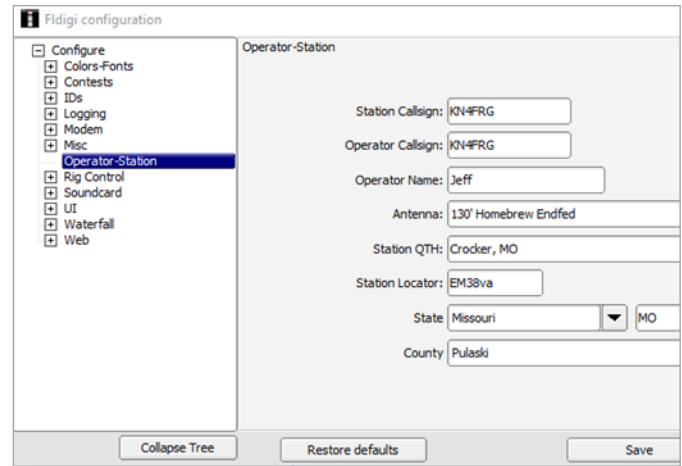
7. Let it install, a shortcut will show up on your desktop. Double-clicking will open FLDIGI.

8. The installation is complete and the new FLDIGI should maintain the old configurations if this is an upgrade to a previous version. It will not replace your old shortcut from previous versions, the old version will remain on your Desktop.

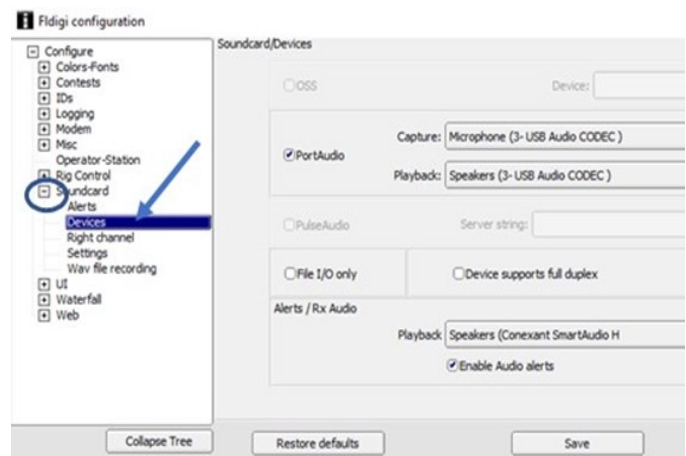
9. If this is an update, I would verify your own configuration installed during the update by going to "Configure" in the upper menu, click configure and then select "Config Dialog."



10. At the next window, choose your appropriate "Configure" profile and verify it was added by simply clicking on the "+" sign and in some cases choose a subpart of the menu item to verify.



As a note, to check the soundcard connections hit the "+" by "Soundcard" and then choose "devices." You must have your radio and external soundcard connected to verify the codecs are working.



11. If this is your first install, then launch FLDIGI using the shortcut on your desktop and walk through the configuration wizard setting up your personal data. After completing your personal data, Hit "Next." At this point, the operator should configure their soundcard next. The wizard should take you to this point, but if not, use step 9 and 10 to get to the configuration location. For first use, select "PortAudio" devices and if using a device like a Signalink USB interface (ensure the external soundcard is connected and powered on), select the down arrows and choose the audio Codecs for both "Capture and Playback" - then hit "Save."

There are instructions available on the internet

## NOTES FROM THE BACKACRE

\_ Buzz Kutcher, K3GWK



From the Backacre -- 05 May 2020

Happy Cinco de Mayo ...

How many of you have a QSL card? Those of you who operate HF, have you received any QSLs from stations you have worked?

Do you send out cards in return?

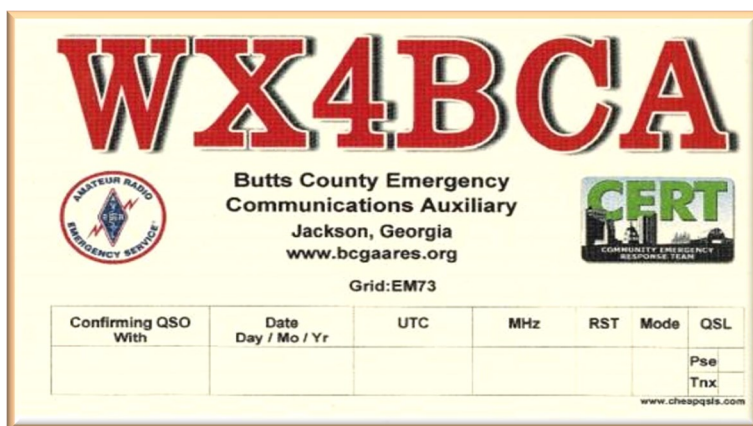
With the rise of the Internet QSL services like QSL and LOTW, the exchange of an actual card has become rare. I still answer any direct QSL received, I usually

don't reply to cards from the buro though, and I send cards (with an SASE) to any new DXCC entities I work. The club has a very nice QSL card. I believe it was designed by David Burnham and is printed by "Cheap

QSLs" - but don't let the name fool you, Cheap QSLs is a good supplier. They have a wide range of quality products. <https://cheapqsls.com/>

I'll get into handling QSLs and electronic QSL'ing in a future issue of *The Repeater*.

That's about it from Jenkinsburg Station. Thanks for all you do for Amateur Radio in and around Butts County.



"When all else fails, ham radio works."  
Wear your mask and wash, wash, wash.

73,

K3GWK <AR>

### Is your ARRL membership up-to-date?

This is important for our club affiliation with ARRL.

Please update and inform the membership chairman.

**Tues Net NCS for May**  
**Ken KM4HOS**



**Tues Net NCS for June**  
**will be drawn from a hat ...**



### K4SGH - Sylvan Grove Hospital Net

Checking in from home stations, Dan W4DED made the D-Star connection, Darlene KK4BKF got through for HF, and Nancy K4NEP accomplished the FLdigi connection. Ken KM4HOS was put on stand-by mode to fill-in if need be, but really, he was up to his eyeballs filling-in last minute for the FLdigi NCS, who had a 'malfunction'.

May's State Hospital Net was successful.

\_ Dan W4DED



## 2005 Net Mgr Report

Nancy, K4NEP, in her 1st (of many I hope) appearances as NCS, held 4 ARCoBC Trng Nets in April, and we averaged 9+ voice chk-in's, 3+ on digital, and 7+ on WL. We still need some more Digital participation. Me thinks Nancy had fun and learned a few things in the process, which we ALL do when we practice on these nets. Plus, with HAM radio, we still get to be 'social' and can keep up w/ each other and 'wutz up' in our 'socio-isolated' worlds.

We still need NCS volunteers for the weekly Trng net each month and still need to cover May and on thru the year. If anybody wants to volunteer as a Net Controller, pls lemme know. The NEW (200329) 'Preamble' (script) is posted on the groups.io 'files' pages. Again, if any of y'all think of any improvements we'd wanna consider puttin' into the net, pls lemme know. Also, I'll be more than happy to send you my macros for FLDigi and show you how to use 'em. They're also posted in groups.io, lemme know if yer interested or have any questions.

With the **heavy weather season** startin' up, it's probly time for ALL of us to chk-out & review our auxilliary power sources, Skywarn procedures, how we get our Wx alerts, etc. so we don't get caught off-guard in a weather emergency like we had a couple wks ago. Many thanks to the operators who participated in the Easter wknd Skywarn net.

As ALWAYS, if you are interested in supporting our Response Teams, either at Sylvan Grove Hosp, BC Health Dept, our 911 Ctr, or ol' Yeller as an ARES operator, or just have a general interest in ARES please let our EC, David Burnham, AK4EM, or one of our AEC's know. FREE training is available and also the gratitude of our Butts Co ARES team and our served communities, and please remember -

" we gotta **be able** to **DO** what we **SAY** we can do" and  
 "ya **cain't** **DO** wut ya **DON'T** **practice**."

REALLY appreciate all y'all's time & effort last month in support of Butts Co HAM radio,

73,  
 Ken, KM4HOS  
 Butts Co Net Mgr

FLDigi continued from page 3

for additional instructions for setting up your Signalink, i.e. <https://www.youtube.com/watch?v=7G1DBs-04MM> and/or <https://www.youtube.com/watch?v=NXJKlb0mRcQ>. At this point, if the configuration wizard is still running, hit "Next" through the ensuing popups and finally hit "Finish."



Finally, for this step, if you are trying to configure your radio controlled through FLDIGI, then this is outside the context of this article. Please reach out to your fellow HAMS/Elmers for configuration help dependent on your type of radio. If you have a question regarding the IC-7300 or IC-7100, please let me know.

This article covered the basic steps to install and/or update FLDIGI. FLDIGI is a suite of tools allowing an operator to communicate across multi-modes. The software is an open and free resource. FLDIGI provides the ability for operators to communicate during ARES events sending and receiving information pertinent to supporting your local community. To continue setup for this means (ARES), please see this link for additional information - <http://www.arrl.org/nbems>. FLDIGI also provides the ability for operators to communicate across HF using PSK, RTTY, and several other modes to communicate via the keyboard. FLDIGI is a great tool to use digital modes as another resource in the operator's toolbelt.

\_ Jeff

## 200504 BCHD Report

We got chk'd into 5 outta 5 GA HD Nets last month, a little challenging w/ the Griffin, WA4ASI rptr on & off for maintenance, but we 'adapted, improvised, and overcame'. Thx to all our RT mbrs for another successful month AND especially the Butts Co Health Dept STAFF for their support of our KW4BHD HAM station as well as ALL they're doin' NOW for the Covid-19 pandemic.

May will still be busy for the BCHD office staff, so... for our BCHD RT mbrs, we're gonna continue to chk-in to the GA DPH Net each week, but we'll do it fm HOME, as 'off-site' chk-ins.

It'll be one less time the girls have to go to the front door and take somebody's temperature and then spray down where they were afterwards. We'll revisit this in June and see how it's all shakin' out. I'll let y'all know when things chg and we can go back to doin' our weekly GA DPH Net chk-in's fm the DPH office in Jackson.

If you're D-Star equipped, ANY of you in the ARCoBC can chk-in fm home or your mobile stations. Just tell 'em you're 'off site' and representing the Butts Co Health Dept in Jackson, GA, District 4. If you need help finding the D-star repeaterz we use, gimme a holler and I'll give you a list or the RT syst. file we use in our K4SGH or KW4BHD radios.

ALL the BCHD RT operators should make sure they have 'up to date' FLDigi/FL Msg, and Win-Link Express (w/ UZ7HO's 'Sound Modem' program) on their laptops so we're able to tx/rx using 'digital' modes if the Health Dept staff needs us to. The weekly GA DPH Net chk-ins DON'T need a laptop, it's just a D-Star voice chk-in.

Thx fer yer support...

Ken, KM4HOS,  
yer friendly, neighborhood HD rep

## 200504 EP SURVEY Report

brought to you this month by '**Social Distancing of Butts Co**'. A NON-volunteer (spell dat Volen-TOLD) group dedicated to maintaining our health & SANITY until all this mess is **OVER!!** ugghhh!!! Speakin' for mysef, my 'social life' w/ my lawn mower, hedge clippers, weedeater, & blower is startin' to git old. (altho the yard is startin' to look nice) Thank goodness for radios!!

Even tho 'the Gov' sez we can start 'semi-relaxin' the current Covid-19 social distancing protocols, me thinks it would be wise to see how the next couple weeks shake out here in da Peach State and our 'Beautiful Butts County'. Sooo... for May we'll NOT do the BC EP Survey of Zone 2, and we'll revisit this issue in June and see when it'll be prudent to do the Survey.

Again, when we FINALLY git a 'round tuit', we'll need a good turnout, (6+ at least), to get thru **Zone 2**. It's not the biggest or farthest, but we need to navigate around the Tussahaw Branch of Jackson Lake into 'the Peninsula' between the Tussahaw and South River Branches of the Lake, with no faster 'thru' roads anywhere. Gonna be slow & time consuming and would be REAL nice to add a 'stationary' Alternate NCS at **Fire Station #6** and/or **#3**, plus the 3 'mobiles'. **Zone 2** runs NE outta Jackson roughly between GA36 and Stark/Jackson Lake Inn Roads all the way to the South River arm of the Lake/county line.

Y'all stay SAFE, and DON'T relax too quick as our Butts Co 'Covid numbers' are still steadily climbin'. Covid-19 may still be slowin' down, cuz these numbers are indicative of what happen'd last week or so, but ya never know... Check up on yer friends & neighbors and have a GREAT month, we might be seein' 'the light at the end of the tunnel', hope it ain't that pesky freight train again.

until our next Adventure into WILD (Covidated) Butts Co,

Ken, KM4HOS  
ARCoBC **NON-Recreational Adventure** chairman

# ARES Report:

## Butts County Membership:

Active ARES

14

Volunteer in Training

14

## GA ARES & Butts County ARES Event Participation by User

4/1/2020 - 4/30/2020

Butts 035GA - Volunteers

Name	Email	Events	Hours
Glenn Baker (KM4NRP)	gmbaker308@gmail.com	2	0.50
David Burnham (AK4EM)	burnham1078@gmail.com	5	3.50
Mark Clark (NI2Y)	NI2Y@arrl.net	9	17.00
Michael Crowe (AJ4GU)	aj4gu@arrl.net	13	9.00
Danny Darsey (W4DED)	w4ded@arrl.net	14	8.00
George Kutcher (K3GWK)	k3gwk@arrl.net	17	25.50
John Lipscomb (KA3SME)	john.Lipscomb@delta.com	4	3.00
Melvin Mosier (KK4QJR)	yknot@bellsouth.net	3	1.50
Jeff Phillips (KN4FRG)	forcefrog@gmail.com	8	7.50
Nancy Phillips (K4NEP)	topazmeadows@yahoo.com	12	10.50
Darlene Ragon (KK4BKF)	LRagon@aol.com	1	2.00
Chris Southerland (KJ4PLJ)	csoutherland77@gmail.com	1	NR
Ken Wallis (KM4HOS)	kawallis@charter.net	25	21.80
Glenn Wyatt (KK4GNO)	glennwy@aol.com	4	1.95
<b>Total</b>	<b>14 users displayed</b>	<b>118</b>	<b>111.75</b>

## Butts County Event Participation by Event

Georgia &gt; Butts - 035GA

Date	Event	Hours
4/07/2020 7:30pm	Georgia > Butts - 035GA > Net > Butts Co. ARES Net	10.75
4/13/2020 2:45am	Georgia > Butts - 035GA > SKYWARN > Butts County SKYWARN Net	10.00
4/14/2020 7:30pm	Georgia > Butts - 035GA > Net > Butts Co. ARES Net	6.95
4/21/2020 7:30pm	Georgia > Butts - 035GA > Net > Butts Co. ARES Net	7.75
4/28/2020 7:30pm	Georgia > Butts - 035GA > Net > Butts Co. ARES Net*	2.50
<b>Total</b>		<b>37.95</b>

\*Net shortened by a repeater malfunction

# NETS

(rev. 03022020)

## SUNDAY:

**Metro ARES FM Net** - 1st Sunday ONLY at 1600L,  
WA4ASI repeater, Covington, 146.925 -, 88.5 PL  
KK4GQ repeater, Fayetteville, 145.210 -, 131.8 PL  
KC4AQs repeater, Paulding Co, 145.805 +, 100.0 PL

**GA ARES/ARCBC WL Express Net** - Send an ICS-213  
(or regular typed msg, if unable 213) to KX4MAT  
and WX4BCA by 1800L. Please use a Winlink RF  
gateway; Winmor packet, etc, if capable; other-  
wise, use Telnet.

**GA ARES Digital Nets** - 2100Z [1600 EST winter/1700  
EDT summer] 3.583 MHz USB.

- **GA ARES 'Traffic' Net** - EVERY mo, FLDigi, MT-63 1KS,  
centered 2K MHz. Called by GA ARES districts, send  
a 'chk-in' msg w/ 'I have traffic' when your district  
is called, wait til CFM'd, then ICS-213 to KX4MAT  
NCS.
- **GA ARES 'check-in' Net** - EVEN mos, FLDigi, BPSK125,  
centered 1000Hz, justa 'text' check-in only and  
runs concurrently with the 'Traffic' Net.
- **GA ARES D-RATS Net** - 2130Z [1630 EST/1730 EDT].  
ODD months, port: gaares.ratflector.com, use  
'chat' to ck-in; also under 'messages', send ICS-213,  
if able; runs concurrently with 'Traffic' net.

**GA Section HF Net** - 2200Z [1700 EST/1800 EDT],  
3.975 MHz LSB, voice, by callsign prefix.

## TUESDAY:

**Butts County Training Net** - 1930L, WX4BCA repeat-  
er, 147.285 MHz, + offset, 131.8 PL, begins with  
voice check-ins, followed by NBEMS Digital Net.  
WL Express msgs accepted. If WL was NOT sent the  
previous Sunday, just send to WX4BCA with name,  
callsign, location, also if using aux power.

\*\*\* For other training opportunities, see the ARCBC  
Group.io website, and/or the GA ARES website for  
other Nets w/ days, times, frequencies, protocols,  
etc, for your training convenience.\*\*\*

# CONTACT INFO

**PRESIDENT - Elaine Stachowiak**  
**KW4AQ, ubudogems@hotmail.com**

**VICE PRESIDENT, EDITOR - Nancy Phillips**  
& **MEMBERSHIP K4NEP, k4nep@arrl.net**

**SECRETARY - Darlene Ragon**  
**KK4BKF, lragon@aol.com**

**TREASURER - John Lipscomb, IV**  
**KA3SME, john.lipscomb@delta.com**

**PUBLIC INFORMATION OFFICER - Buzz Kutcher**  
**K3GWK, k3gwk@arrl.net**

**EC & ARESConnect - David Burnham**  
**AK4EM, burnham1078@gmail.com**

**AEC & VE TEAM ADMINISTRATOR - Dan Darsey**  
**W4DED, w4ded@arrl.net**

**AEC & CERT LIAISON - David Ridgeway**  
**KK4SUO, dpridgeway@bellsouth.net**

**AEC & SHERIFF LIAISON - Mark Clark**  
**NI2Y, NI2Y@arrl.net**

**AEC & TECHNICAL ADVISOR - Mike Crowe**  
**AJ4GU, aj4gu@bellsouth.net**

**SKYWARN COORDINATOR - Elaine Stachowiak**  
**KW4AQ, ubudogems@hotmail.com**

