

The Repeater

- / / . / . - . / . / . - - . / . / . - / - / . / . - . //

WX4BCA 147.285 + (131.8)

Amateur Radio Club of Butts County



Jackson, GA



Are you Self-Isolating? Need someone to talk to? Try

PARKS ON THE AIR

There are many opportunities that an amateur radio operator can practice portable operations or prepare for emergency communications to support your local ARES group. Field day is the premier event held once a year that can provide a club the ability to exercise emergency communications and flex their muscles to see if club members can operate for longer periods while portable. Another form of portable operations allowing the operator to work in the great outdoors is Parks on the AirSM (POTA).

POTA provides opportunities for the operator to advance their portable deployment skills, win awards, ragchew with other like HAMs, take in some spectacular views across the US, and get a dose of sunshine at the same time. The main objective of POTA is to promote emergency awareness and communications from national and state level parks. There are more than 10,000 sites to choose from in the U.S. and Canada. As of today, there are over 947,490 accumulated QSOs by PO-

TA operators making contacts across the phone, CW, and digital modes. A small group of folks started POTA in 2016 to extend operations for portable operations. Below is a sampling of the parks available in our local area.



POTA can combine, of course, Ham radio, the outdoors, portable operations, and with the right conditions, the occasional pileup. POTA provides publicity to Amateur Radio and with amateur radio along with POTA, the program brings publicity to parks that might be overlooked. I have only activated three parks so far, and those parks are short distances away, but I was totally unaware of their existence until I reviewed the POTA website. If anyone reading this article is interested in operating portably, especially at your local state parks, go to www.parksontheair.com to gather additional information. Operating portably can require specific gear for the Ham operator.

POTA continued on page 2

Nancy Phillips

Editor

573-528-0697

K4NEP@arrl.net

FC - 3 - POTA - KN4FRG

4 - Net Reports - KM4HOS

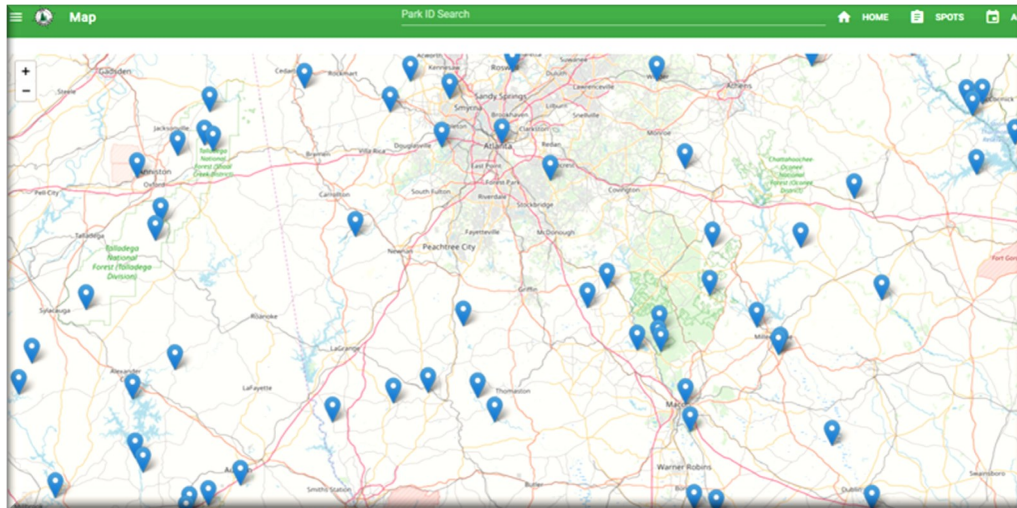
5 - Dues notice

6 - **Nets, GA Welfare Net**

7 - Calendar & Contact Info

April 2020

Vol 8, No 4



A sampling of Parks on the Air sites available near Atlanta (left)

Chameleon MPAS 2.0 Antenna Kit (below)



Most folks rely on transceivers that have more of a mobile style - Yaesu FT-891, IC-7100, Yaesu FT-857, and others - the lighter the better, especially if you are hiking to your operating spot. Honestly, you can operate portably with the IC-7300, but requires a little forethought before operating. Most POTA operators use a radio, a battery, the occasional tuner, and a good portable antenna. I personally use the IC-7100 (I received for Christmas) with headset (Heil Proset IC), a Bioenna 20ah Lithium Iron Phosphate Battery, the LDG IT100 Tuner, coax, and a small assorted of portable antennas with a 40' Spiderbeam.

The IC-7100 does require a little more battery than the FT-891/857, but operates well mounted within my truck or sitting on a picnic table at the park. The radio coupled with the tuner uses about .6 amps to operate and the described battery lasts for six hours - longest operating time working on battery power at 100watts. I normally use the Spiderbeam antenna mast with a 70' Endfed antenna and/or a rather expensive, but great-designed Chameleon MPAS 2.0. The endfed is homebuilt and works very nice at my home station and at portable sites from 10M to 80M using my attached tuner. The MPAS 2.0 is a complete antenna system including a vertical antenna components, BALUN, radial or counterpoise, 70' antenna line designed for several different configurations using the provided transformer.

The kit also provides a spike that connects to the BALUN and easily can support the desired configuration. The last item is a pack that will contain all items included - a very compact and complete kit.

The image below portrays the activation of POTA K-6507 using the Chameleon MPAS 2.0 Vertical Configuration from the back of the Truck - no picnic table available. (The power lines are no where near me.)



During each activation, the vertical configuration fared very well and provided small pileups while operating on 40M and below. I used the end-fed configuration also

POTA continued on page 3

POTA continued from page 2

and it provided the best operating conditions on 20M and above. All and all, the MPAS 2.0 is a complete kit, but rather expensive (\$550), at least for me. It provides an easy to setup antenna system - vertical system usually takes less than 5 mins. Right, is a picture of the antenna during the activation of K-6509 - again no picnic table.



So, if portable operations and seeing the outdoors while operating your Ham radio interest you, then POTA might be your next adventure. POTA might or might not take a little investment, but it can add some additional fun into your life - it has been fun for me, especially while we 'socially distance' during the virus event. Your POTA system should be easily configured, lightweight, and with easy setup. There are a lot of antenna systems out there designed specifically for portable operations, but it will require a little time on your part to complete research to decide on the best system for your type of operations - hiking, picnic table, or attached to your vehicle. The MPAS 2.0 serves my purpose very well. POTA offers a great opportunity to promote Ham radio and your local Park System, so, give it a try. Also, a great warm-up for the next Field Day!

— Jeff Phillips
KN4FRG

Here are a few more pics from my POTA trips.



200302 BCHD Report

We got chk'd into **3** outta **4** GA HD Nets last month, yeah, me & Rudy fergot what day it wuz in this current state of 'shelter-in-place monotony'. In any case, many thx to all our RT mbrs for another successful month AND especially the Butts Co Health Dept STAFF for their support of our KW4BHD HAM station as well as **ALL** they're doin' NOW for the Covid-19 pandemic.

April will be a bear for the BCHD office staff, so... for our BCHD RT mbrs, we're gonna continue to chk-in to the GA DPH Net each week, but we'll **do it fm HOME**, as 'off-site' chk-ins. If it's good enuf for the GA Hosp Net, it's good enuf for us, besides it'll be one less time the girls have to go to the front door and take somebody's temperature and then spray down where they were afterwards. We'll revisit this for May/June and see how it's all goin'.

The DPH exercises scheduled for March were postponed due to the national/state Emergency. No word yet as to whether they'll be rescheduled or not.

If you're D-Star equipped, ANY of you in the ARCBC can chk-in fm home or your mobile station. Just tell 'em you're 'off site' and representing the Butts Co Health Dept in Jackson, GA, District 4. If you need help finding the D-star repeaterz we use, gimme a holler and I'll give you a list or the RT syst. file we use in our K4SGH or KW4BHD radios.

ALL the BCHD RT operators should make sure they have 'up to date' FLDigi/FL Msg, and Win-Link Express (w/ UZ7HO's 'Sound Modem' program) on their laptops so we're able to tx/rx using 'digital' modes if the Health Dept staff needs us to. The **weekly** GA DPH Net chk-ins DON'T need a laptop, it's just a D-Star voice chk-in.

Thx fer yer support...
Ken, KM4HOS,
yer friendly, neighborhood HD rep

200406 EP SURVEY Report

brought to you this month by the 'Anti-Social Society of Butts Co'. Dedicated to bein' snobs and not rubbin' elbows w/ the local riff-raff (that'd be ALL of us). Altho, I'd hoped to be able to finish the 'drivin' around' part of the Survey in March, **da gubmint** had other plans due to Covid-19. We'll revisit this for May/June and see when it'll be prudent to do Zone 2.

When we finally git around to it, we'll need a good turnout, (**6+**) at least, to get thru **Zone 2**. It's not the biggest or farthest, but we need to navigate around the Tussahaw Branch of Jackson Lake into 'the Peninsula' between the Tussahaw and South River Branches of the Lake, with no faster 'thru' roads anywhere. Gonna be slow & time consuming and would be **REAL** nice to add a 'stationary' Alternate NCS at **Fire Station #6** and/or **#3**, plus the 3 'mobiles'. **Zone 2** runs NE outta Jackson roughly between Ga36 and Stark/Jackson Lake Inn Roads all the way to the South River arm of the Lake/county line.

Y'all stay **SAFE**, and **OWN** this thing, as it's up to **ALL** of us to do what we can to 'flatten the curve'. Check up on yer friends & neighbors and have a good, healthy, 'self isolated' month.

until our next Adventure into WILD
(Covidated) Butts Co,
Ken, KM4HOS
ARCBC NON-Recreational Adventure
chairman

200402 Net Mgr Report

We held 5 ARCoBC Trng Nets in March, and we averaged 10.5 voice chk-in's, 4.5 on digital, and a 7.5 on WL AND this upward trend is startin' to look like the NEW average for our weekly training net. **Outstanding!!** Really good to see more participation fm our group, More familiarity w/ our equipment and our net procedures will help us ALOT, at least time-wise, to be able to hit the ground runnin' when we get a call fm our EC and need to start a net, or even deploy.

Nancy, K4NEP, will be doin' her 'inaugural' NCS sessions in April, another good thing to see. The more **practice** we ALL have as Net Controllers, seeing the need for less 'talk' and more concise 'communi-cation', will 'clean-up' our nets (training & otherwise) considerably and make 'em more efficient which is IM-PORTANT, especially if YOU'RE the one who 'notices something' that we need to START a net for. Anyways, let's ALL try our best to participate as often as we can (and give Nancy a REAL workout this month, yuk, yuk)

We still need NCS volunteers for the weekly Trng net each month and still need to cover May and on thru the year. If anybody wants to volunteer as a Net Controller, pls lemme know. The NEW 'Preamble' (script) is posted on the groups.io 'files' pages. We put a long overdue 'directed' net blurb into it (my bad) to clean it up a little more. Again, if any of y'all think of any more improvements we'd wanna consider puttin' into the net, pls lemme know. Also, I'll be more than happy to send you my macros for FLDigi and show you how to use 'em. They're also posted in groups.io, lemme know if yer interested.

As ALWAYS, if you are interested in supporting our **Response Teams**, either at **Sylvan Grove Hosp, BC Health Dept**, our **911 Ctr**, or **ol' Yeller** as an ARES operator, or just have a general interest in ARES please let our **NEW EC**, **David Burnham, AK4EM**, or one of our AEC's know. **FREE** training is available and

K4SGH - Sylvan Grove Hospital Net

State Hospital Net:

As the virus spreads, the hospital team will be Manning our radios at home.

We can do everything from home, except communicate in person with the hospital staff. I don't see the hospital team entering the hospital during the pandemic.

If you have any questions, contact Dan Darsey at w4ded@arrl.net.

DUES ARE DUE

Dues are \$20 and were due by March. Please send your dues to Nancy Phillips, 348 W 2nd St, Jackson, GA 30233. Make checks payable to ARCBC. Please include your call sign.

also the gratitude of our Butts Co ARES team and our served communities, and remember -

"we gotta be able to **DO** what we **SAY** we can do."

and
"ya cain't **DO** wut ya DON'T **practice**."

Appreciate all y'all's time & effort last month in support of Butts Co HAM radio,

73,
Ken, KM4HOS
Butts Co Net Mgr
200402 BC EP Survey Report

NETS

(rev. 03022020)

SUNDAY:

Metro ARES FM Net - 1st Sunday ONLY at 1600L,
WA4ASI repeater, Covington, 146.925 -, 88.5 PL
KK4GQ repeater, Fayetteville, 145.210 -, 131.8 PL
KC4AQS repeater, Paulding Co, 145.805 +, 100.0 PL

GA ARES/ARCB WL Express Net - Send an ICS-213
(or regular typed msg, if unable 213) to KX4MAT
and WX4BCA by 1800L. Please use a Winlink RF
gateway; Winmor packet, etc, if capable; other-
wise, use Telnet.

GA ARES Digital Nets - 2100Z [1600 EST winter/1700
EDT summer] 3.583 MHz USB.

- **GA ARES 'Traffic' Net** - EVERY mo, FLDigi, MT-63 1KS,
centered 2K MHz. Called by GA ARES districts, send
a 'chk-in' msg w/ 'I have traffic' when your district
is called, wait til CFM'd, then ICS-213 to KX4MAT
NCS.

- **GA ARES 'check-in' Net** - EVEN mos, FLDigi, BPSK125,
centered 1000Hz, justa 'text' check-in only and
runs concurrently with the 'Traffic' Net.

- **GA ARES D-RATS Net** - 2130Z [1630 EST/1730 EDT].
ODD months, port: gaares.ratflector.com, use
'chat' to ck-in; also under 'messages', send ICS-213,
if able; runs concurrently with 'Traffic' net.

GA Section HF Net - 2200Z [1700 EST/1800 EDT],
3.975 MHz LSB, voice, by callsign prefix.

TUESDAY:

Butts County Training Net - 1930L, WX4BCA repeat-
er, 147.285 MHz, + offset, 131.8 PL, begins with
voice check-ins, followed by NBEMS Digital Net.
WL Express msgs accepted. If WL was NOT sent the
previous Sunday, just send to WX4BCA with name,
callsign, location, also if using aux power.

*** For other training opportunities, see the ARCBG
Group.io website, and/or the GA ARES website for
other Nets w/ days, times, frequencies, protocols,
etc, for your training convenience.***

ARES REPORT

Level I ARES Members: 13

Level II ARES Members: 10

Level III ARES Members: 5

Butts Co ARES Events: 11

Butts County ARES Hours: 121.80

Butts County ARES Total Hours: 159.80*

* Includes GA Section Event Hours by Butts
ARES Members

Butts Co ARES Event Hrs:

- ◆ Stark WX Exercise Comm Testing: 11.50
- ◆ Monthly Meeting: 30.75
- ◆ ARES Net: 7.95
- ◆ DPH Exercise: (None reported)
- ◆ Stark WX Planning Review: 25.00
- ◆ ARES Net: 9.50
- ◆ BCSS Safety Team Meeting: 6.00
- ◆ Stark WX FSX Prep: 11.00
- ◆ ARES Net: 5.60
- ◆ ARES Net: 7.80
- ◆ ARES Net: 6.70

Hours Not Reported: 24.00

Georgia Welfare Net

Tuesday, Thursday, & Saturday - 1900 hrs

3.971.000 LSB (alt 3.923.000 LSB).

*This net is a Directed net,
with Steve K4SDJ as NCS.*

**The purpose of this net is to keep up with
the status of persons and counties
during of the COVID-19 pandemic.**

Is your ARRL membership up-to-date?

This is important for our club affiliation with ARRL.

Please update and inform the membership chairman.

CALENDAR

**NO GATHERINGS OF THE ARCBC
WILL BE HELD UNTIL FURTHER
NOTICE DUE TO THE LOCKDOWN
ORDERED BY GOVERNOR KEMP**

APRIL 2020

4 - Fox Hunt - Bring HT & Tape antenna, FS7, 0900

6 - Monthly Meeting - 7 PM, Jackson FGs

"DMR Programming" - Chris Southerland

18 - Hungry Hams - 0730 Huddle House, 16 & I-75

18 - Tech Saturday - 0830, FS #7, 144 Colwell Rd

MAY 2020

4 - Monthly Meeting - 7 PM, Jackson FGs

"Drones" - Pete Acevedo

9 - Hungry Hams - 0730 - Huddle House, 16 & I-75

9 - VE Session - 0900, FS #7, 144 Colwell Rd

JUNE 2020

1 - Monthly Meeting - 7PM, Jackson FGs

"Field Day"

20 - Tech Saturday - 0830, FS7, 144 Colwell Rd

26-27-28 - FIELD DAY - Kersey Pavilion

JULY 2020

6 - Monthly Meeting - 7 PM, Jackson FGs

**Tues Net NCS for April
Nancy K4NEP**



**Tues Net NCS for May
- needed -**



CONTACT INFO

PRESIDENT - Elaine Stachowiak

KW4AQ, ubudogems@hotmail.com

VICE PRESIDENT, EDITOR - Nancy Phillips

& MEMBERSHIP K4NEP, k4nep@arrl.net

SECRETARY - Darlene Ragon

KK4BKF, lragon@aol.com

TREASURER - John Lipscomb, IV

KA3SME, john.lipscomb@delta.com

PUBLIC INFORMATION OFFICER - Buzz Kutcher

K3GWK, k3gwk@arrl.net

EC & ARESConnect - David Burnham

AK4EM, burnham1078@gmail.com

AEC & VE TEAM ADMINISTRATOR - Dan Darsey

W4DED, w4ded@arrl.net

AEC & CERT LIAISON - David Ridgeway

KK4SUO, dpridgeway@bellsouth.net

AEC & SHERIFF LIAISON - Mark Clark

NI2Y, NI2Y@arrl.net

AEC & TECHNICAL ADVISOR - Mike Crowe

AJ4GU, aj4gu@bellsouth.net

SKYWARN COORDINATOR - Elaine Stachowiak

KW4AQ, ubudogems@hotmail.com

