



## BUTTS COUNTY EMERGENCY COMMUNICATIONS AUXILIARY

Dedicated to serving the communities in and surrounding Butts County, working hand-in-hand with local and state governments, the Red Cross, and other non-profit community-service organizations.

# THE REPEATER

MARCH 2017



### INSIDE THIS ISSUE:

CALENDAR OF EVENTS 2

FROM THE BACKACRE 3

VINTAGE QSL CARDS 4

HOSPITAL STATION UPGRADE 5

RADIO GARDEN COMMERCIAL STREAMING 6

TECH NOTES WA4VBX 7

CLUB DIRECTORY 8

## PAUL NEWBERRY (N4PN) DX CHAMP DELIGHTS CLUB

At our February club meeting, Paul Newberry (N4PN) kept club members spellbound as he recounted the numerous DX trips he has made. The Macon, GA-based Newberry has been a licensed ham for 64 years having earned his Novice license in 1953. Paul rode the famous passenger train, the *Nancy Hanks*, from Macon to Atlanta to take his test. Paul subsequently attained the Advanced and Extra Class licenses.

Paul operates from his home QTH in Macon, "where I have 14 antennas on a small lot." He also has a contest station on St. George Island in the Florida panhandle. "I have been in 101 countries operating DX," the affable Newberry stated. "DX has always been my love."

Paul has worked 383 countries (entities) including 334 on 160 meters. For this, Paul enjoys the distinction of being #2 in the world on 160 meters. "I also love 6 meters," Paul admitted, "I have worked 40 countries on 6 meters."

Over the years Paul has collected 430 plaques and 850,000 QSL cards. "I plan to donate the plaques to the Special Olympics. They can take the face plates off and re-use them," Paul explained.

Paul's favorite exotic location is Croatia. "I've been there 16 times," Paul said. Over the years Paul has deepened his friendship with a high Croatian government official,

Emile. Paul regaled the club with anecdotes about the times he has leveraged his friendship with Emile to avoid airport security, bring ham equipment into the country, and operate from Croatia with a Croat call-sign. "Once Emile took me to a government office where I was presented with an official Croatian certificate of citizenship," Paul recalled with a smile.

Locally, Paul is very involved in the Georgia QSO Party. He has operated mobile in 73 Georgia counties during the QSO Party over two days. He recently logged 3,982 contacts including 17 foreign countries and all 50 states during the Georgia QSO Party.

"I can go 70 hours without sleep," Paul admitted. His prowess in DX contesting comes from the fact that he can operate in a weekend contest with little to no sleep.

"I beat the kids with stamina" Paul asserted.

Paul served in the United States Navy as a radioman. At that time he could operate CW at 65 words-per-minute. Now, Paul says he can still operate at 55 wpm.

Because of Paul's obvious expertise and his stellar speaking skills, we have extended to him another invitation to return and share some stories about the many DXpeditions he has operated in.

Thanks to Buzz (K3GWK) for inviting Paul to speak. Ω



Paul Newberry ((N4PN)

### SAVE THE DATES

**Sundays @ 21:30 Z**  
Weekly Butts County  
FM Training Net  
147.285- PL 131.8

**March 6**  
Monthly Training  
Meeting, FS#7  
7:00 PM

**March 18**  
Hungry Hams  
Lunch Box, 7:30 AM  
VE Session,  
BC Rec Center,  
9:00 AM

**WX4BCA REPEATER 147.285- PL 131.8**



## UPCOMING EVENTS CALENDAR

March

- March 2,9,16** — General Class, FS #7, 6:30 PM  
**March 6** — March Club Meeting (Paul Newberry N4PN, Contesting), FS #7, Pre-meeting dinner, Mesquite Grill, 5:30 PM  
**March 14** — Newton County Club Meeting. NC Law Enforcement Center, 7:00 PM  
**March 18** — Hungry Hams, Lunch Box Restaurant, 7:30 AM V.E. Session, Butts Co Rec Center

April

- April 3** — April Club Meeting (QRP with Newt White N4EWT), FS #7, Pre-meeting dinner, Mesquite Grill, 5:30 PM  
**April 11** — Newton County Club Meeting. NC Law Enforcement Center, 7:00 PM  
**April 15** — Hungry Hams, Lunchbox Restaurant, 7:30 AM Tech Saturday  
**April 22** — 1st Quarter ARES exercise, Bluebird & Bluegrass Festival Dauset Trails



## Online Articles / Sites of Interest to Hams

Here is a link where you can link to over 500 Amateur Radio websites:

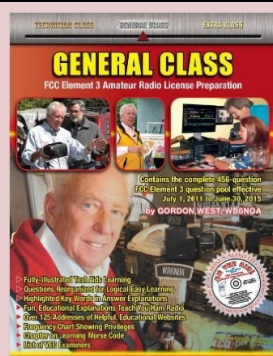
<http://ksarri.org/deeplink/>

Here's a great video on how to home brew a simple 2 meter quarter-wave ground plane antenna:

<https://youtu.be/cFp8CYLf0c>

Dan Darsey (W4DED) can be seen on Ham Nation at the Orlando HamCation. See Dan at 7 min. 5 sec. into the program:

<https://twit.tv/shows/ham-nation/episodes/287?autostart=false>

**General License Prep Class**

**March 2,9,16**

**6:30 — 8:30 PM @ Fire Station #7**

**V.E. Session — March 18**

**\*All-Star Faculty**

(\*Actually not—but we'll do our best to get you ready!)



## FROM THE BACKCRE — BUZZ (K3GWK) Butts County Emergency Coordinator

It can't be March already. I have been batching it since early February. Freida is in Pennsylvania, assisting a long time family friend who fell and broke her knee. It was a real "I've fallen and I can't get up" situation. Our friend was on the floor, alone for several hours before she was able to call for help. Freida has been providing very patient patient care and "occupational therapy" as well as doing all the daily chores. It has been pretty quiet here. Did have a couple of good days on HF... Two ATNO (All Time New One) contacts: Pitcairn Island on 10 SSB and Guinea on 20 SSB. Pitcairn Island is where the *HMS Bounty* mutineers finally settled. Descendents of Fletcher Christian still live there today.

Our 2017 General License class got off to a good start with seven participants. Our instructor corps has been working hard to help these new hams. Thank you to all of the club members who came to the special Saturday session on Transmitters and Receivers; two class sessions and "Show N Tell" demonstrations. Mike had a table full of equipment for our students to see. The class is in its sixth week – four more sessions to go.

I am over the "post partum" concerns with my new logging program, *Amateur Contact Log* by N3FJP. It is very nice software with many features that appear magically as you use the program. The LOTW interface is well behaved as is the Club Log up-loader. One impressive feature (to me anyway) is the way AC Log interconnects with digital programs like Fldigi and JT65. That feature is part of Scott's Field Day logging program also.

In February we put in a total of 231 Ham Hours; eight nets and seven events. Darlene (KK4BKF), Ken (KM4HOS) and Mark (KM4NRP) operated the Sylvan Grove station for the February Hospital Net. There are some changes coming to that net to make it more of a "mini-exercise" instead of just a roll call. Bret Smith (W4HBS) the ASEC for Public Health has some big plans for expanding our health care support mission. I am looking for good things to happen. Our team's Public Health team leaders, Dan (W4DED) and Ken (KM4HOS), have been working with the Butts County Health Department to establish a ham station at the DPH office. Butts County's Nurse Manager Krystle Whitten (No Call Yet) has been supportive, a positive voice for ham radio.

We participated in a brief Tornado Exercise during Severe Weather Week. The exercise provided a good opportunity to try out some new procedures. We operated two separate stations from the 911 Center. One radio was on our repeater (collecting storm reports) and one was on the WB4GWA repeater in Griffin. WB4GWA is a NWS Linked Repeater. We used the radio on that frequency to monitor the linked net. Elaine and Mark also watched the NWS Chat room for real-time updates. We also moved the NCS to a separate location, this time at the DPH office with Ken (KM4HOS) calling the shots. Ken put the *Control* in NCS.



Our ARES roster now stands at 28 (-3). There are 18 Active members on the list. We have restored the Deployable status designation to indicate Active members who also have qualified for a Georgia ARES Badge. We currently have 10 members with that designation: AK4EM, K3GWK, KA3SME, KA3ZPM, KK4SKY, KK4SUO, KM4HOS, KM4NRP, W4DED and NI2Y (KW4VB). There are 9 Pending members who need to register and/or complete Basic ARES, IS -100, IS-700 and IS-802 to be eligible for Active ARES

membership. If you want to know what courses you have and what courses you need, you can either check your GA ARES Database page or send me an email. I will reply with your current training status. Remember to include Butts County (EC Buzz Kutcher K3GWK) when you register for the Gwinnett Basic ARES course.

March 6<sup>th</sup> will be a bittersweet meeting for me, my last as club president. Thank you all for everything you have done to make our club a success. I am looking forward to sitting in the back for a change. HI!

That's about it from Jenkinsburg Station. (Weather Underground ID: KGAJENKI2)

Thanks again for all you do...

73, Buzz (K3GWK)

Ω





## VINTAGE QSL CARDS

**W1MK** The Headquarters Station of the  
AMERICAN RADIO RELAY LEAGUE, INC.  
39 LaSalle Road, West Hartford, Connecticut, U. S. A.

Transmitter, two 500-watt 6X4 crystal-controlled temperature-controlled; two 6BA6 as T.P.T.G. Power Source: 2000 volt 50 Hz. Also battery, vapor rectified and filtered d.c. Antenna: Horizontal. Bands: 35 A, and 5 or 2 A. Frequency: Two-wave voltage fed "super" 14-wave 3500 kc., 5, or 3-4 wave 7 or 14 mc. Bands: 3700 kc., 3100 kc., 3 and 14 mc.

Other station equipment: photo Receiver, etc. Frequency meter, monitor, jigger and other controls. "Automatic" type transmitting unit for sending addressed information to A.R.R.L. members daily (except Wed. and Sat.) at 8 a.m., 10 p.m., and midnight E.T.T., simultaneously on frequency in two bands, the QST or Radio Amateur's Handbook for schedule of operation.

Dear W3UV A Glad QSO  
on 4/20/38 at 2:38 A M. E.S.T.  
QSA DX  
Thanks for mail  
Glad to exchange  
5 messages  
Very 73,  
"Hal" Beebe  
Operator

**W1ES**  
57 BALLARD DRIVE  
WEST HARTFORD, CONN.

CONFIRMING QSO WITH-  
W3UV A ON 3.5 MC BAND  
4 DEC. 1938 - 1251 AM EST  
Ur sigs were RST 579  
fine Q to Charley  
but couldn't place  
you at first

73 A.A. HEBERT "AH"  
TREASURER-EMERGENCY, A.R.R.L.  
LT. CV(S) U.S.N.R.

Member ARRL-A-1 Oprs Club-RCC

very pleased to QSO you!

ARRL





## SYLVAN GROVE HOSPITAL STATION WX4BCA UPGRADE

Take a look at the most recent improvement to our emergency amateur radio station at Sylvan Grove Hospital.

With many thanks to Mike (AJ4GU), Dan (W4DED), Rudy (KA8LAD) and Buzz (K3GWK) who took the repeater “off air” for about an hour and neatly re-installed the repeaters and isolation cans into an equipment rack donated by Whit (WA4VBX).

Not only does the upgrade improve the appearance of the room, it also makes for a quieter operations center for those manning the station.

Thanks also to Bruce who is the new maintenance engineer at the hospital who has been so helpful and cooperative to our Hospital Team.

Ω



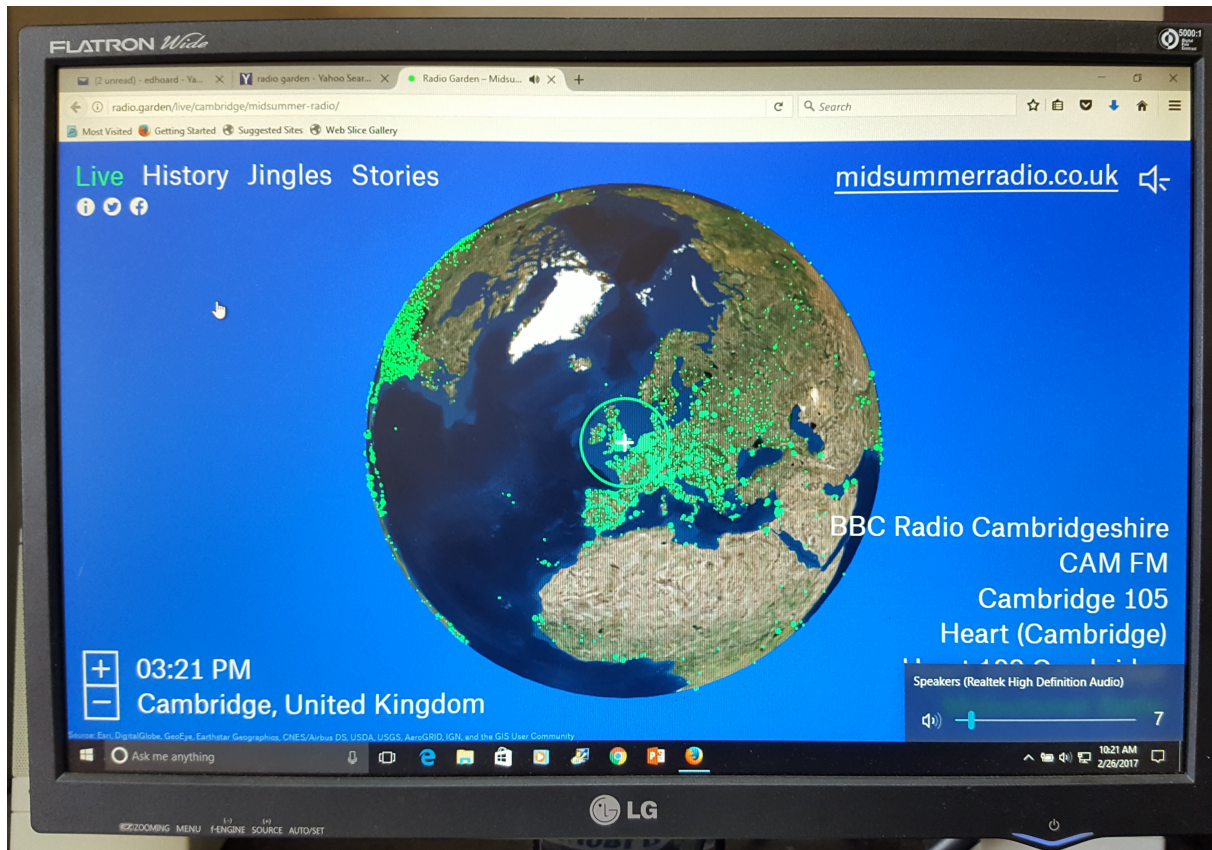
Our Thursday night General Class continues to help get these “Techs” ready to take their General License Exam.



During our recent Saturday session Mike (AJ4GU) brought HF radios, oscilloscope, and lots of other show-and-tell items to the delight of the class.



## RADIO GARDEN TURNS THE EARTH INTO A COMMERCIAL RADIO TUNER



Imagine being able to spin an image of the earth on your computer screen, tuning into commercial radio feeds that pop up as you move across the planet's surface. That's now possible with a new site called *Radio Garden* (<http://radio.garden/>).

Using real-life satellite imagery, Holland's Studio Puckey has created an online installation that makes finding and listening to about 8,000 audio streams as easy as moving your mouse. It allows you to spin the earth such that a tuning circle in the middle of the screen turns from white to green whenever you encounter a location with one of more live commercial broadcast streams. Each broadcast location is marked with a bright green dot, which you can click on to go directly to that station's audio stream. You can zoom in and out of the earth's image using the mouse's scrolling wheel.

Amsterdam-based Studio Puckey was invited by the Netherlands Institute for Sound and Vision to create an interactive installation incorporating

content from an international research project called Transnational Radio Encounters. To populate Radio Garden, Studio Puckey's staff uses custom content management software that helps them connect new streaming sites to the site's earth-based graphical interface.

As a publicly-funded art installation, *Radio Garden* was never intended to become a mass-market phenomenon. But since it launched in December, the website has captured attention and people have been logging on in droves. There were 12 million unique visitors in the first month and 20 million unique hits!

Because of the site's traffic, funding has been a problem to purchase the hardware to keep up with the visitor demand. Unfortunately, the site may have to be taken down if additional funding is not forthcoming.

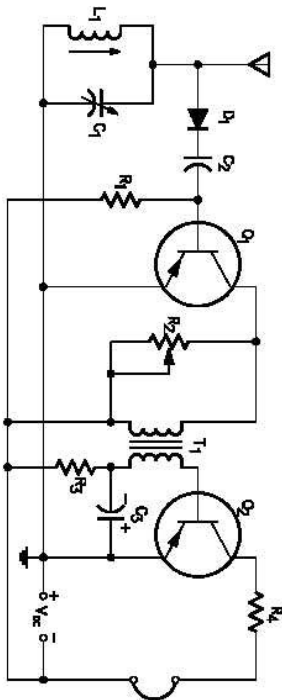
(Thanks to **RadioWorld** magazine for this article.)





# Tech Notes

Whit  
WA4VBX



## POWER SUPPLY LOAD TESTER

How much load will your power supply deliver and will it maintain the desired voltage?

Most regulated power supplies have a desired voltage (d.c.) of 13.8 volts. (Usually they have an internal adjustment for setting the voltage output.) The voltage on the power supply will drop slightly when a load is applied. This tester should determine how much the voltage dips with various loads. If the voltage dips much more than several tenths of a volt when loaded, then more study is required. If the voltage dip is acceptable, if it is then nothing needs to be done. If the voltage dip is not acceptable, then it may require getting a larger supply, running the power supply in parallel with healthy battery or repair the power supply if it is defective.

One way to check a power supply is to hook it up to a "dummy" load and monitor the voltage at no load and at loaded conditions. It is not easy to find a "dummy" load that is suitable to measure various ampere levels. The "dummy" load must be able to provide the desired load for a long time and not over heat. By using one made to use auto lamps, the load can be tested for as long as desired with the heat dissipated into the air.

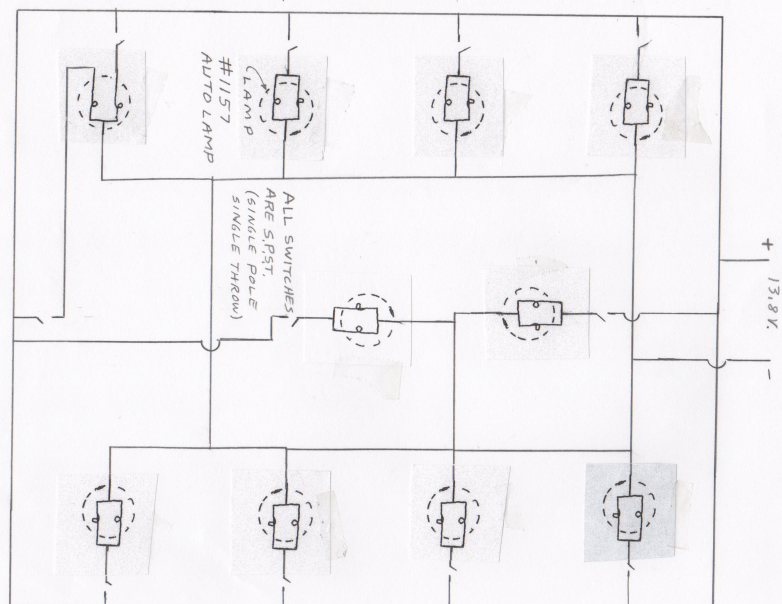
This tester consist of 10 auto lamps that are switched. Each of 9 lamps has two filaments and both are connected to a switch to turn on or off 2.75 amps of load. The 10th lamp also has two filaments with each filament switched separately to turn on or off .5 amps and/or 2.25 amps. This arrangement allows for a wide range of loads from .5 amps to 27.5 amps.

The ampere values above are approximate. One filament draws .57 amps, and the other filament draws 2.16 amps. Together they draw 2.73 amps. The numbers were rounded make rough calculations easier.

Below is a wiring diagram and a pictorial of the "dummy" load that was built. Branch wiring should come with the lamp socket , and is usually # 18. The main wiring should be sized for the total load and be at least # 12 wire.



WIRING DIAGRAM





Visit our website: [www.bcgaares.org](http://www.bcgaares.org)

**BUTTS COUNTY EMERGENCY  
COMMUNICATIONS AUXILIARY**

348 Patrick Circle  
Jenkinsburg, Georgia  
30234  
770-957-0779  
[wx4bca@arrl.net](mailto:wx4bca@arrl.net)

**Net Control Station Roster**

**March**

**April**

Melvin KK4QJR

**May**

Darlene KK4BKF

If you'd like to serve as NCS, please  
email Ken (KM4HOS), Net Manager:  
[kawallis@charter.net](mailto:kawallis@charter.net)

**BUTTS COUNTY AMATEUR  
RADIO CLUB**

**President**  
Buzz Kutcher K3GWK  
[k3gwk@arrl.net](mailto:k3gwk@arrl.net)

**Vice-president**  
Dan Darsey W4DED  
[w4ded@arrl.com](mailto:w4ded@arrl.com)

**Secretary**  
Darlene Ragon KK4BKF  
[lragon@aol.com](mailto:lragon@aol.com)

**Treasurer**  
John Lipscomb IV  
[john.lipscomb@delta.com](mailto:john.lipscomb@delta.com)

**Public Information Officer**  
Ed Hoard WX4ED  
[edhoard@yahoo.com](mailto:edhoard@yahoo.com)

**Club Photographer**  
J.D. Van Sickle KM4DHS  
[jvan12@charter.net](mailto:jvan12@charter.net)

**BUTTS COUNTY EMERGENCY  
COMMUNICATIONS AUXILIARY**

**Emergency Coordinator**  
Buzz Kutcher K3GWK  
[k3gwk@arrl.net](mailto:k3gwk@arrl.net)

**A.E.C. / V.E. Team Admin.**  
Dan Darsey W4DED  
[w4ded@arrl.com](mailto:w4ded@arrl.com)

**A.E.C. / CERT Team Liaison**  
David Ridgeway KK4SUO  
[dpridgeway@bellsouth.net](mailto:dpridgeway@bellsouth.net)

**A.E.C. / Sheriff's Dept. Liaison**  
Mark Clark KW4VB  
[merc17@live.com](mailto:merc17@live.com)

**A.E.C.**  
David Burnham AK4EM  
[burnham1078@gmail.com](mailto:burnham1078@gmail.com)

**SKYWARN Coordinator**  
Elaine Stachowiak KW4AQ  
[ubudogems@hotmail.com](mailto:ubudogems@hotmail.com)

**Technical Coordinator**  
Mike Crowe AJ4GU  
[aj4gu@bellsouth.net](mailto:aj4gu@bellsouth.net)

**Director, Butts County  
OHS/EMA**  
Glen Goens KJ4TV0

**Net Manager**  
Ken Wallis KM4HOS  
[kawallis@charter.net](mailto:kawallis@charter.net)

**Weekly Training Net:**

**Sunday 21:30 GMT  
4:30 EST 5:30 EDT  
WX4BCA Repeater  
147.285- PL131.8  
Jackson, Georgia**

**BUTTS COUNTY / SOUTHERN CRESCENT AREA NETS — HF, VHF & UHF**

**Sunday (4:30 pm) GA ARES Digital Net — 3583 KHz (USB) or 7042 (PSK-31) Center 1000 Hz**

**Sunday (5:30 pm) GA ARES D-Rats Net on the GA ARES Port**

**Sunday (21:30Z) Butts CO FM Training Net — 147.285 MHz (131.8 PL) Winlink: WX4BCA**

**Sunday (22:00Z) GA ARES SSB Net — 3975 KHz (LSB) Winlink: WX4GMA**

**Sunday (9:00 PM) SE Weather Net on D-Rats**

**Monday (9:00 pm) Southern Crescent FM Net — 145.170 MHz (146.2 PL) & 444.875 MHz (123.0 PL)**

**Monday (8:30 pm) Central GA District Digital Net — 3583 KHz (PSK-63/125) Center 1000 Hz**

**Tuesday (7:30 pm) NW GA Digital Net — 3853 KHz (USB) or 7042 (PSK-125) Center 1000 Hz**

**Tuesday (8:00 pm) GA CERT FM Net — 146.805 MHz (100.0 PL)**

**Wednesday (9:00 pm) SE Metro Digital Net — 146.925 MHz (88.5 PL) (MT63-2KL) Center 1500 Hz**

**Thursday (8:00 pm) NCRC/ARES/RACES FM Net — 146.925 & 444.800 MHz (88.5 PL) Winlink: K4NCR**

**Thursday (9:00 PM) Barnesville/Lamar County W8JI Repeater Net — 147.225 (no tone)**

**Saturday (11:00 am) \*SATERN Net (Southern Section) — 7262 KHz**

**METRO ARES FM NET**

**1st Sunday (4:00 pm) Metro ARES FM Net — 145.430 MHz (107.2 PL)**

Also on EchoLink at WB4NWS-R (Node: 593209)

**Newsletter Submissions**

Please submit all articles and /or suggestions to **Dr. Ed Hoard** (WX4ED)  
[edhoard@yahoo.com](mailto:edhoard@yahoo.com)